

FROST  
SCIENCE

# Impact Report

FISCAL YEAR 2024



IT'S OUR  
WORLD,  
EXPLORE IT.

# PHILLIP & PATRICIA FROST MUSEUM OF SCIENCE



# About Frost Science

## Our Mission

Frost Science inspires and connects people of all ages and backgrounds to enjoy science and technology, and to better understand ourselves and our world.

## Our Vision

The universe is astounding. We see science as a pathway to understand its wonder, facing its challenges and navigating a sustainable future. Our vision is to create compelling STEM (science, technology, engineering and math) education that inspires learning and innovation and enables people to explore real, rigorous science.



**At Frost Science, we believe that science has the power to inspire, educate, and transform lives. Through our exhibitions, events, and programs, we ignite curiosity and foster a deeper understanding of the world around us. Our mission is not just to share knowledge, but to create meaningful experiences that have a lasting impact on our community and beyond.**

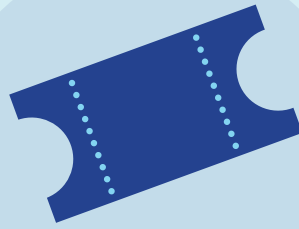
**DR. DOUGLAS A. ROBERTS**

President & CEO, Phillip and Patricia Frost Museum of Science

# FY2024 By the Numbers



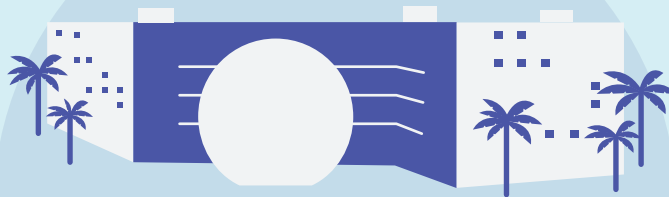
Over  
**10,880**  
member  
households



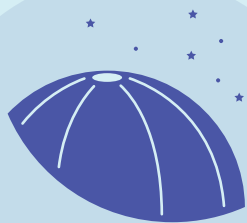
Over  
**685,000**  
guests visited



Over  
**130,000**  
people of all ages  
reached through  
educational  
experiences



Open 365  
days a year



Over  
**3,600**  
shows played in the  
Frost Planetarium

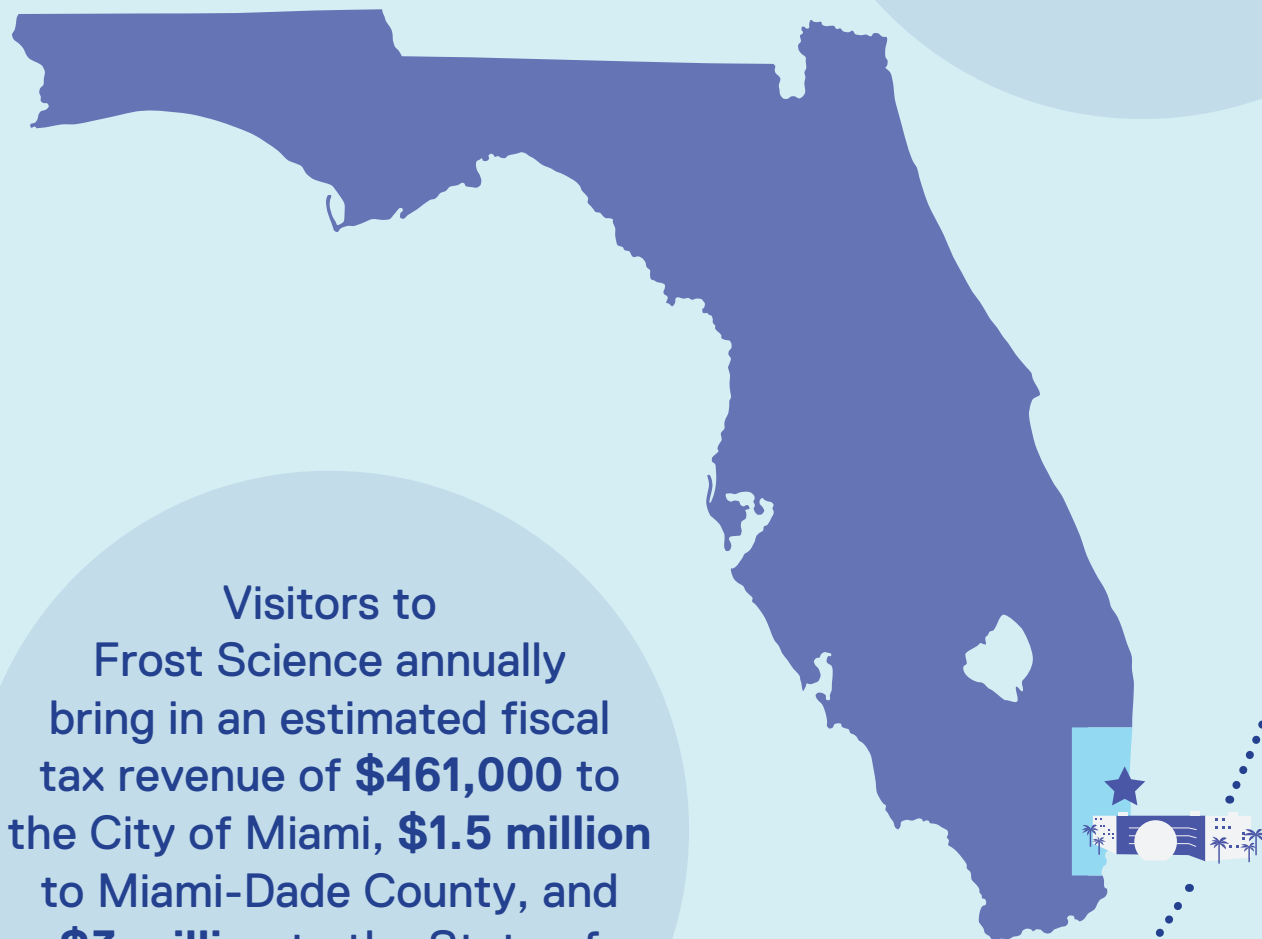


Over  
**4.5 million**  
guests have visited  
since opening in 2017



**82**  
institutions  
engaged in  
collaborations

Frost Science's total economic impact (estimated as direct, indirect, and induced impact) is **\$82.7 million** annually in Miami-Dade County and **\$103.2 million** across the State of Florida.

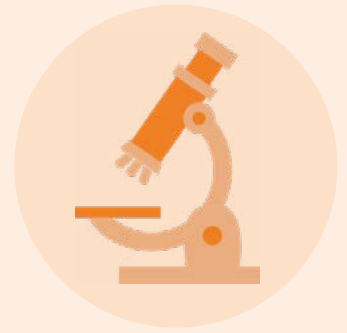


Visitors to Frost Science annually bring in an estimated fiscal tax revenue of **\$461,000** to the City of Miami, **\$1.5 million** to Miami-Dade County, and **\$3 million** to the State of Florida, a total tax revenue of nearly **\$5 million**.

*The above impact figures are from the ConsultEcon, Inc. Management & Economic Insight study, prepared for the Phillip and Patricia Frost Museum of Science in April 2024.*

# Educating Young Scientists

Frost Science educates students, teachers, and people of all ages about the world around us. Our programs range from Mini-Me Science, for children ages 2-5 years old, to Tech Lab, which put cutting-edge technology into the hands of Miami families. Our award-winning camps and K-12 programs delight kids and teens alike, so everyone can experience the wonders of science.



## UPWARD BOUND MATH AND SCIENCE

The Frost Science Upward Bound Math and Science (UBMS) program enrolls 65 top students from Title I schools in the Miami area in a four-year weekend and summer science program. Since its founding 25 years ago, Frost Science's UBMS program has made a lasting impact on over 1,000 students, with approximately 95% going to college—the majority being the first in their families to do so. Many pursue science careers.



*Your Shores* is just one of four tracks in the museum's UBMS program! The others are Community Action Projects for the Environment; Storytelling through Arts, Technology and Science; and Video Game Design.

## YOUR SHORES

*Your Shores* is a collaborative program between the Frost Science conservation and education departments that gives UBMS students interested in marine science formative, hands-on experience in the field. *Your Shores* alleviates obstacles associated with pursuing a career in marine science by providing stipends, opportunities to earn scuba certifications, college readiness seminars, and real research experience to students. In FY2024, seven students participated—five of whom are now pursuing marine science in college.



**We are proud of our partnership with Frost Science, which gives M-DCPS students the chance to get hands-on with that latest science, ignite their curiosity through intentional and fun experiences, and engage with real museum scientists.**

**CRISTIAN CARRANZA**

Administrative Director of STEAM, Miami-Dade County Public Schools

### BY THE NUMBERS

**58,600**

students visited the museum on field trips, 12,300 of them for FREE

**200**

educators participated in Frost Science professional development sessions

**500**

families attended Mini-Me Science and Tech Lab programming

**179**

pre-kindergarten classrooms (over 4,000 students) received our Early Childhood Hands-On Science (ECHOS) curriculum

**900**

science campers enjoyed 12 weeks of Frost Science's award-winning summer, winter, and spring camps

**37**

schools (over 1,700 students) participated in our STEM Designation program, a partnership with Miami-Dade County Public Schools

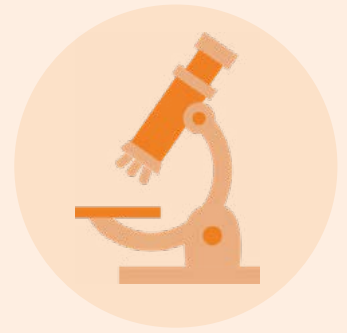


### STEM CHALLENGE

In August 2024, we kicked off the first-ever STEM Challenge for middle and high school students in Miami-Dade County and surrounding areas. More than 1,500 participating students will use the engineering design process to create innovative solutions to real-world problems related to Frost Science's core disciplines of marine science, health, paleontology, and astronomy. Top students will win college scholarships generously funded by the Glenn W. Bailey Foundation.

# Bringing Science to Life

The Frost Science team brings the museum to life each day with educational and entertaining programming. Guests can touch real coral skeletons, explore the universe in the immersive Frost Planetarium, watch explosive chemical reactions on stage, and much more. These experiences leave lasting impressions that shape the next generation of scientists.



## SCIENCE SHOWS

Science Shows are performed regularly on the museum's Ocean Gallery stage. In FY2024, we exploded pumpkins, hosted puzzling science trivia, created chilling liquid nitrogen clouds, and even breathed fire to teach audiences about the world around us. Science Shows are written and performed in-house, allowing us to wow our audiences in fun, theatrical and educational ways.



## SPARKS OF SCIENCE

In FY2024, we offered four seasonal passport programs with 16 Sparks of Science activities for Frost Science guests to pack even more science into their visits. Guests were given a themed passport card and challenged to complete all the corresponding hands-on science activities throughout the museum. Anyone who filled their passport earned a science prize!

### BY THE NUMBERS

**23,000**

guests engaged through  
Sparks of Science and  
Science Shows

**25**

unique  
Sparks of Science  
activities executed

**6**

Science Shows  
performed on the  
Ocean Gallery stage





# FROST PLANETARIUM

FY2024 was one of expanded programming in the Frost Planetarium, including a new live-presented program under the umbrella title “Frost Science Presents...” This set of rotating, interactive shows blends elements of science stage shows with the Frost Planetarium’s full-dome visualization capabilities. We also worked on several cutting-edge collaborations, including an art-science-technology series called FilmGate Fusion and an eclipse-themed concert with the Alhambra Orchestra and Dennis C. Moss Cultural Arts Center (The Moss Center).



## BY THE NUMBERS

Over  
**460,000**  
guests engaged in the  
Frost Planetarium

**1,267**  
guests saw a show per day,  
on average

**41**  
different shows presented

# Caring for Florida Wildlife

Frost Science is home to a variety of amazing wildlife. Most of these animals are Florida native species, giving guests a chance to discover our state's wildlife up close. Our highly skilled biologists care for these animals 365 days a year.



## ROSEATE SPOONBILL BIRTH

Summer 2024 was an exciting time in our Mary M. and Sash A. Spencer Aviary, as we welcomed the first roseate spoonbill chick ever hatched at Frost Science. Born to first-time parents Scoop and Ladle, the chick was dubbed Teaspoon by our community. Her presence inspires guests to learn about roseate spoonbill conservation and their importance to South Florida ecosystems.

## CORAL CARE

In addition to hundreds of fish, reptiles, and birds, the museum currently cares for 12 Florida species of stony coral. These include 120 pillar coral colonies with 65 distinct genotypes. Pillar coral is critically endangered, and scientists estimate there are fewer than 40 colonies remaining in the wild in Florida. The pillar corals we care for at Frost Science are a precious and invaluable resource for ensuring a future for this iconic species.



## BY THE NUMBERS

150

adult coral colonies housed at Frost Science

3,000

coral larvae settled and raised in the Marine Conservation WetLab

27,000

pounds of food fed to animals

1,000

dives by aquarists in museum aquariums

6.4 million

gallons of water from Biscayne Bay cycled through our aquariums

8

endangered and critically endangered species cared for at Frost Science

## RESCUE ANIMALS AT BATCHELOR ENVIRONMENTAL CENTER

The museum's Batchelor Environmental Center on Florida International University's Biscayne Bay Campus is a permanent home to four rehabilitated raptors. These birds all have healed injuries that limit their flight abilities, making it impossible for them to survive in the wild. Now, they impress and inspire museum audiences as part of our Animal Ambassador program. Short-tailed hawks Buddy and Akela are particularly special, as Florida is the only US state where short-tailed hawks live.



Red, a 12-year-old female red-shouldered hawk



Buddy, an 18-year-old male short-tailed hawk



Akela, a 15-year-old female short-tailed hawk



Athena, a young female eastern screech owl

# Conserving Florida Ecosystems

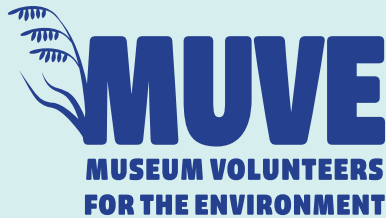


Our conservation team protects and restores Florida’s coastal ecosystems through our long-running Museum Volunteers for the Environment (MUVE) program and the NOAA-funded National Coral Reef Conservancy at Frost Science, also known as ReeFlorida.

## REEFLORIDA SYMPOSIUM

As part of ReeFlorida, Frost Science hosts an annual meeting of scientists, conservationists, government officials and educators working to protect Florida’s Coral Reef. The 2024 symposium attracted more than 200 people to Frost Science. Attendees expanded their knowledge about reef conservation efforts—and strengthened their conservation collaborations—through contributed talks, workshops, and a panel discussion with local government representatives. On the opening day of the symposium, we were joined by Miami-Dade County Mayor Daniella Levine Cava, who proclaimed November 13 “ReeFlorida at Frost Science Day.”





MUVE started as a small eco-art project in 2007 and has since grown into a large volunteer-based habitat restoration effort open to all. Volunteers meet monthly at Haulover Park, Virginia Key North Point, and Crandon Park to remove invasive and nuisance vegetation, plant native species, and clean trash from local beaches. To share the MUVE model with other environmental institutions, in FY2024 we published a peer-reviewed paper in the *Journal of Museum Education*.



**MUVE is a trusted community resource, and their expertise increases our ability to engage new audiences, inspire action, and restore habitat from coastlines to coral reefs.**

**DALTON HESLEY**

Senior Research Associate and Rescue a Reef Program Manager, University of Miami Rosenstiel School of Marine, Atmospheric, and Earth Science

**BY THE NUMBERS**

**934**

MUVE volunteers dedicated a collective 1,700 hours to coastal enhancement

**8,416**

native plants planted

**10,000**

pieces of trash removed from local beaches

**11**

partner organizations engaged through MUVE and ReeFLorida

Over

**163,000**

museum guests educated about corals in the museum's Marine Conservation WetLab

**61**

scientific presentations shared at the ReeFLorida Symposium

# Exhibiting Enthralling Science

Frost Science's exhibitions are the foundation of the museum and the premier way we interface with guests. With seven main exhibitions, including our captivating three-level Aquarium and a special exhibition gallery that rotates shows twice per year, there is a wealth of science to discover.



## SPECIAL EXHIBITIONS

The Hsiao Family Special Exhibition Gallery is Frost Science's home to travelling exhibitions. In FY2024 we presented three immersive and eye-catching exhibitions. We hosted the North American debut of *Sharks*, created by the Australian Museum; took a simulated spin on the International Space Station in *Journey to Space*, developed by the Science Museum of Minnesota; and enjoyed the visually stunning and larger-than-life *Bugs*, produced by the Museum of New Zealand Te Papa Tongarewa and Weta Workshop.



## THE DIG

This year, Frost Science unveiled our newest exhibition: *The Dig*. This gallery, which explores the science and process of paleontology, features real fossils and a stunning life-size cast of the most complete *Tyrannosaurus* skull ever found. Within *The Dig* is our state-of-the-art PaleoLab. Guests can watch as never-before-seen fossils are unveiled, cleaned, and prepared for study.



Frost Science is home to the only paleontology program in South Florida. In FY2024, our scientists published two papers and gave four conference presentations.

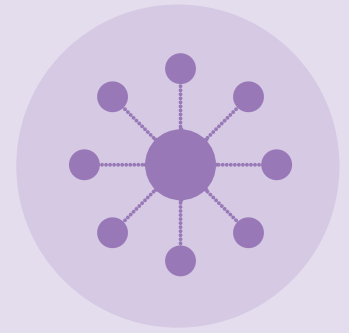


## REEFLORIDA

In FY2024 we installed a series of ReefFlorida exhibits in *The Dive* level of the Aquarium as part of our coral reef conservation efforts. The exhibits highlight the beauty of Florida's coral reef, the conservation challenges they face, and some of the people and organizations working to protect them. A large immersive theater that allows guests to "dive the reef" or watch educational videos is a new focal piece of the gallery. Sharp-eyed guests will also notice new animals in *The Dive*'s aquariums, which showcase Florida's native fauna.

# Inspiring Wide Audiences

Frost Science is continually seeking ways to engage new audiences and bring the most engaging, relevant science to our community. We accomplish this through our monthly LIVE@Frost Science free lecture series along with special events throughout the year.



## SEEN AT FROST SCIENCE

Data visualization expert  
**DR. ALBERTO CAIRO**  
University of Miami

Oceanographer and explorer,  
“Her Deepness”  
**DR. SYLVIA EARLE**

Conservation scientist  
**DR. CASSIE FREUND**  
Frost Science

Shark biologist and Executive Dean of  
the College of Arts, Sciences & Education  
**DR. MICHAEL HEITHAUS**  
Florida International University

Biomedical engineer  
**DR. JOSHUA HUTCHESON**  
Florida International University

Pilot and aviation scientist  
**CAPTAIN BARRINGTON IRVING**  
Experience Aviation and the  
Flying Classroom

Shark ecologist  
**DR. STEPHEN KAJIURA**  
Florida Atlantic University

Marine biologist  
**DR. LES KAUFMAN**  
Boston University

Food scientist  
**VICKIE KLOERIS**,  
retired from NASA

Theoretical physicist and MacArthur  
“Genius Grant” awardee  
**DR. ANA MARIA REY**  
the University of Colorado, Boulder  
and JILA

Cosmologist and author  
**DR. PAUL M. SUTTER**  
Barnard College, Columbia University

**AND MORE!**

## DR. SYLVIA EARLE

Frost Science had a special guest to commemorate Earth Day in 2024: legendary oceanographer, “Her Deepness” Dr. Sylvia Earle! Dr. Earle delivered a special LIVE@Frost Science lecture on her experiences exploring the world’s oceans. She also met with high school students in our *Your Shores* program, inspiring them to pursue their marine science goals.





## THEMED SCIENCE DAYS

In FY2024, Frost Science hosted eight themed science days. These marked Technology and Engineering Day, World Ocean Day, Earth Day, Spooky Science, DNA Day, and Fleet Week, and included solar eclipse viewing celebrations in October 2023 and April 2024. Guests marveled as they watched the Moon pass between Earth and the Sun, their last chances to do so until the next partial solar eclipse visible from Miami on January 26, 2028.



## NIGHTLAB

Last year, we launched an exciting adults-only science event series called nightLAB. These evening events give Miami adults exclusive after-hours access to the museum. Each has a unique science theme, with hands-on science activities, Frost Planetarium shows, and a scientific presentation by an invited scientist. FY2024's nightLAB events were centered around space, the ocean, and the science of light.

### BY THE NUMBERS

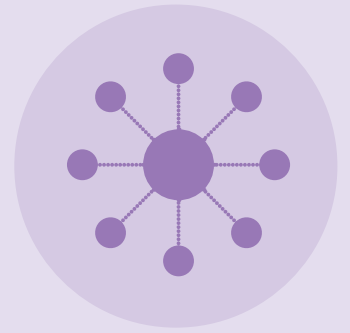
Over  
**20,000**  
guests engaged  
through museum-  
wide event days

**10**  
lectures by high-profile  
scientists through our LIVE@  
Frost Science public lecture  
series, Evening of Discovery  
fundraiser, and nightLAB

Over  
**4,000**  
attendees at  
three nightLAB  
events

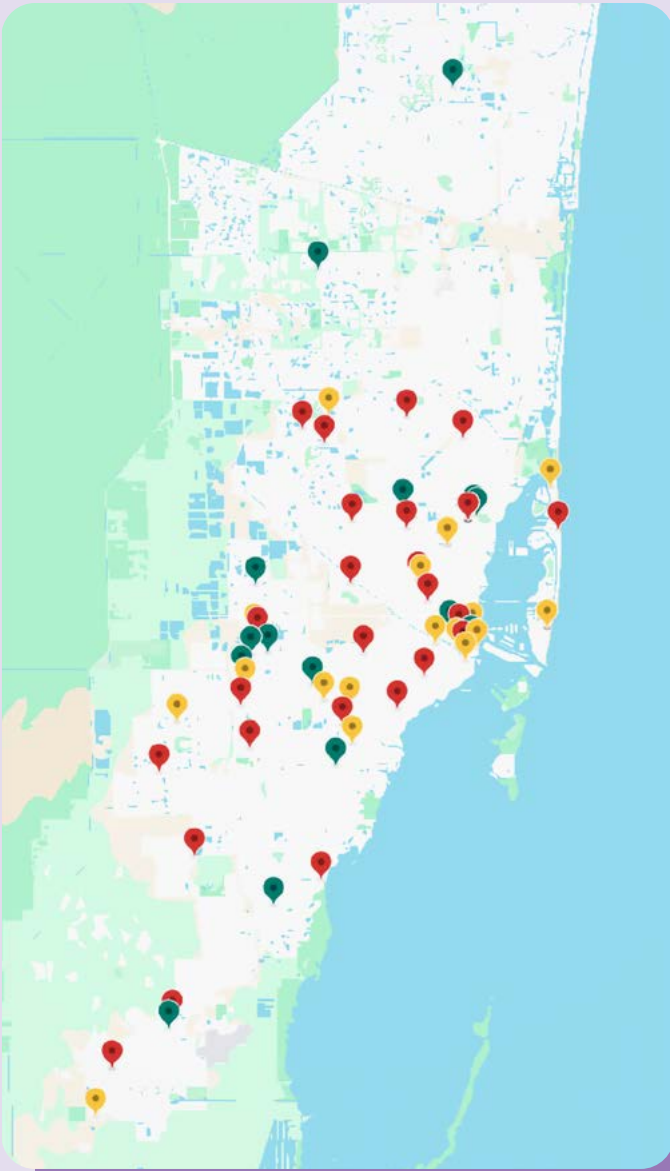
# Engaging Our Community

Frost Science is more than just a museum, it is a valuable community resource. We take science into the community to reach and inspire audiences far beyond our walls. Among other ways, we accomplish this goal by hosting a free annual science festival, bringing science to libraries and schools around Miami-Dade County, and providing space for important civic functions.



## FAMILY FUN FESTIVAL

In February 2024, we held our first-ever free Family Fun Festival on the outdoor Knight Plaza. The space buzzed with energy as an estimated 6,000 people came to see explosive science shows, participate in hands-on science activities, interact with museum partners, and enjoy vibrant musical performances. That first festival was such a success, we did it twice! In November 2024, we held our second Family Fun Festival. Beginning in January 2026, the festival will be an annual community event.



- SCHOOLS
- LIBRARIES
- OTHER COMMUNITY LOCATIONS  
(hotels, cultural centers/events)

Over **6,000** learners reached through 73 outreach programs

Our outreach team traveled a combined **1,855** miles

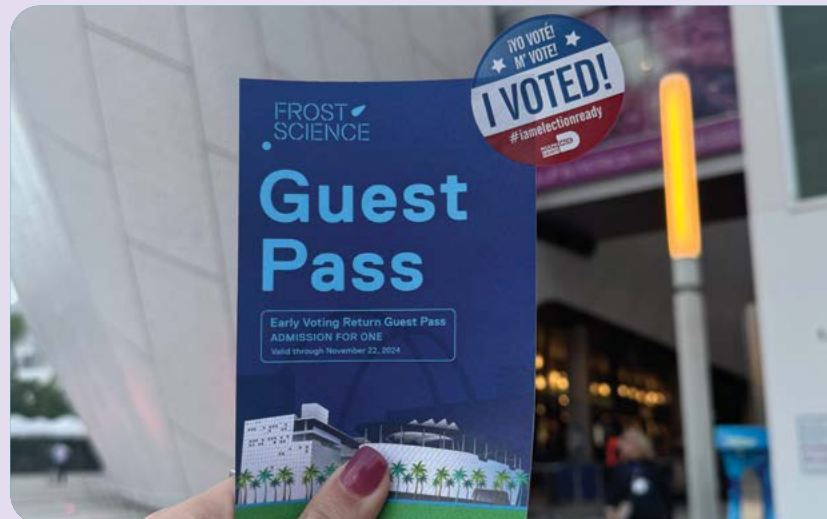
**11,000** people attended a Family Fun Festival

Over **8,500** residents participated in early voting for the November 2024 general election at the museum

Over **400** students engaged in our summer camp curriculum through youth development program GEN2050

## EARLY VOTING

The museum proudly served as one of Miami-Dade County’s early voting locations for the 2024 general election. During the early voting period, people who voted at Frost Science received a voucher for free museum admission and free parking.



# Increasing Accessibility for All

Frost Science is committed to making science accessible to all. We inspire learners of all backgrounds to engage with science through inclusive programming and by expanding community access to the museum.

## JUST FOR ME

Our award-winning, sensory-friendly Just for Me program gives guests with diverse needs the opportunity to discover everything Frost Science has to offer. In FY2024, Frost Science was recognized as an “Autism Friendly Partner” by the Center for Autism and Related Disabilities at the University of Miami and Nova Southeastern University.

## COMMUNITY ACCESS

Frost Science provides free and/or discounted admission to first responders, active US military personnel and veterans, seniors aged 62 and older, and many other groups. We participate in the Miami-Dade Public Library System Museum Pass Program, Golden Ticket, and the Culture Shock program through the Miami-Dade County Department of Cultural Affairs, as well as additional access programs. We also donate tickets to community non-profit groups by request.



**Thank you for the smiles and laughter! You gave the families an amazing experience that I am sure will not be forgotten... Together, we are making a real difference in the lives of families when they need it most.**

**MARIANA REBOLLEDO**

Ronald McDonald House Charities of South Florida

## BY THE NUMBERS

**109**

Title I schools received free field trips to Frost Science

More than

**57,000**

free and/or discounted admission tickets provided through various programs

**643**

museum tickets distributed through Just for Me

# Supporting Interns and Volunteers

We invest in the next generation of scientists and museum professionals by providing a range of internship and volunteer opportunities. We do this in partnership with many national and local organizations, including the Smithsonian Institution, Miami Dade College, and Miami-Dade County Public Schools.

## MUSEUM INTERNS

In FY2024, Frost Science hosted 26 high school and college interns from the institutions and programs listed below. Frost Science interns contributed to our summer camp and other educational programs, developed a new coral reef-focused “Science Short” for the Frost Planetarium, worked on our museum collections, and enhanced coastal ecosystems.

- ✓ Miami Dade College Department of Museum Studies
  - ✓ Miami-Dade County Public Schools
  - ✓ Smithsonian Institution Leadership for Change
  - ✓ Smithsonian Institution Young Ambassadors Program
  - ✓ University of Miami Rosenstiel School of Marine, Atmospheric, and Earth Science
- ...and more!



## FROST SCIENCE VOLUNTEERS

Frost Science also benefits greatly from the service of our volunteers. In FY2024, we worked alongside 108 volunteers who dedicated nearly 6,000 hours of their time assisting five museum departments. An additional 934 people restored Miami’s coastlines through Museum Volunteers for the Environment (MUVE), for a grand total of 1,042 volunteers.

# Leading on Sustainability

Frost Science's commitment to sustainability has always been evident in our conservation programs and our LEED Gold-certified facility. In FY2024, we expanded this commitment with several initiatives in our onsite café, Food@Science, run by our partner Constellation Culinary Group.



## GREENING MUSEUM OPERATIONS

The café is almost 100% plastic free, opting instead for aluminum, bamboo, and sugarcane utensils and packaging. It also exclusively serves sustainable seafood. The museum's Sustainability Committee is reducing the waste Frost Science sends to landfill internally through battery, marker, candy wrapper, and plastic bag recycling programs. Finally, we have created a sustainable event guide for outside organizations hosting their events at the museum to reduce their environmental impact.

## CAFÉ COMPOSTING

This year, Food@Science began a new partnership with the Miami-based community composting initiative, Compost for Life, to compost food containers and scraps from food preparation. Composting keeps food waste out of landfills, reducing greenhouse gas emissions. Last year we composted 51,807 pounds of food and other material! This has the CO<sub>2</sub> equivalent of avoiding 51,392 miles of driving.



## MAKING A MORE SUSTAINABLE FACILITY

In FY2024 we made a number of facility upgrades to reduce our energy usage. These included changing out garage lighting fixtures to high-efficiency LEDs, adding lighting timers and occupancy sensors in back-of-house spaces, swapping older water pumps and motors for high-efficiency equipment, and sealing junctions between air-conditioned and non-air-conditioned spaces. The latter has the added benefit of increasing indoor air quality within the museum.

# Awards and Recognition



November 13, 2024 proclaimed **ReeFLorida at Frost Science Day**  
by Miami-Dade County Mayor Daniella Levine Cava

Center for Autism and Related Disabilities **Outstanding Community Partner Award**

**American Graphic Design Award** for environmental design at the 61st GDUSA Design Awards  
for *The Dig* exhibition

**Favorite Local Museum** by *South Florida Family Life*

**Favorite Afterschool Program or Activity – Miami** by *South Florida Family Life*

**Favorite Camp Program – Miami** by *South Florida Family Life*

**Best Museum in Miami 2024** by *Miami Kids Magazine*

*Miami Herald* “Miami-Dade Favorites” **Silver award for Favorite Museum**

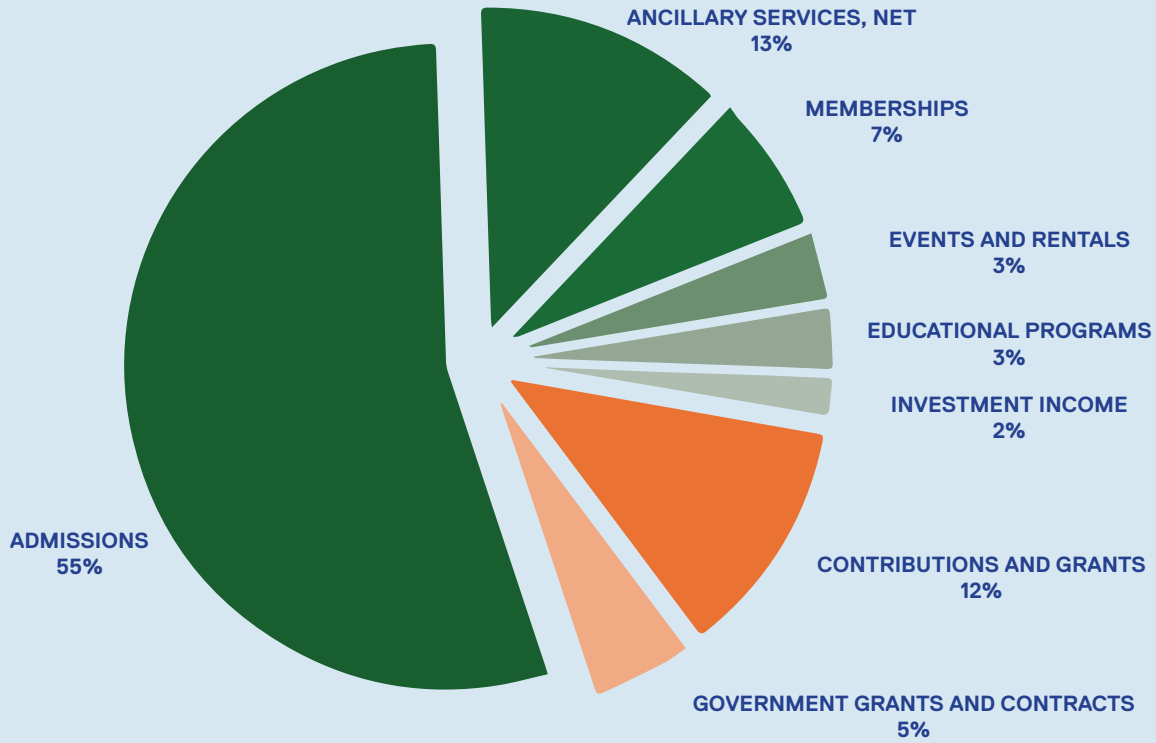
*Miami Herald* “Miami-Dade Favorites” **Bronze award for Favorite Family Attraction**

*Miami Mom Collective* 2024-2025 **“Mom-Approved Award” for Best Museum**

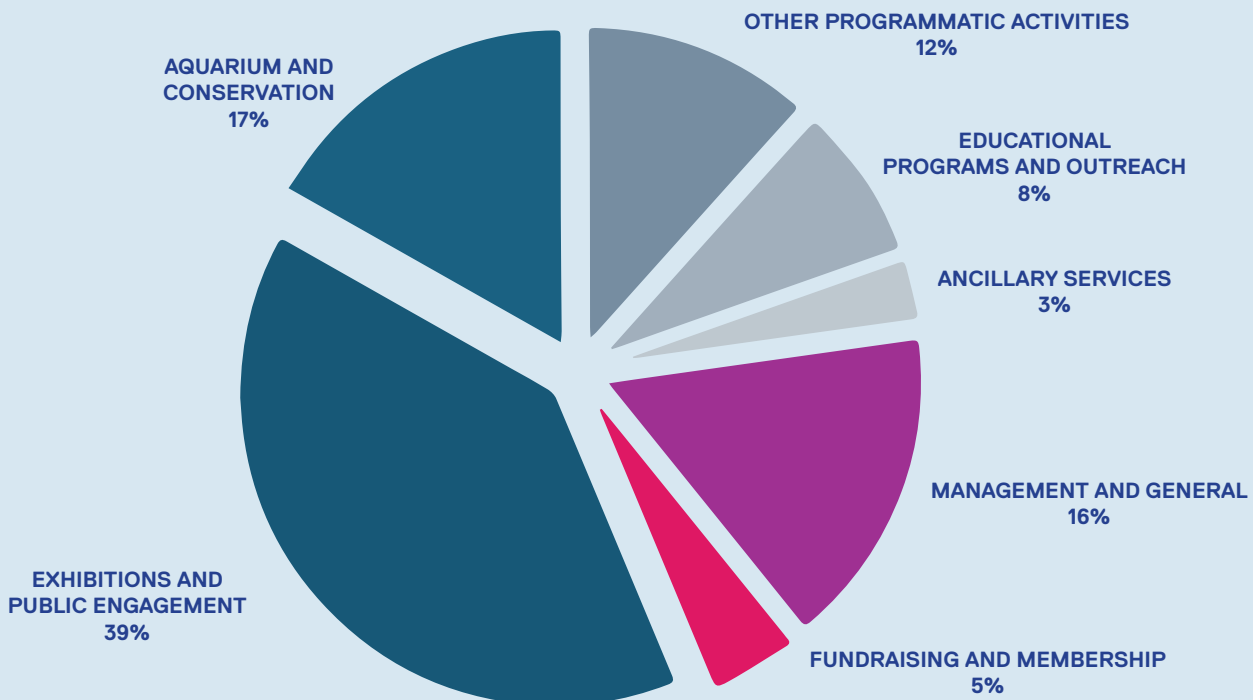
# Financials and Advancement

In FY2024, our operating budget was \$24.5 million.

## REVENUE



## EXPENDITURES





# Board of Trustees

## EXECUTIVE COMMITTEE

Cesar L. Alvarez, Chairman  
Richard C. Pfenniger, Jr., Vice Chairman  
Chief Carladenise Edwards  
Steven R. Frank  
Patricia Frost

Dr. Phillip Frost  
Dr. William A. Haseltine  
Richard J. Lampen  
Marialaura Leslie

## TRUSTEES

Tanvi Vattikuti Abhi  
Jeffrey Applebaum  
Dr. Matthew Denesuk  
Joseph L. Falk  
Sandra Forges  
Commissioner Keon Hardemon  
Kelly Jin  
Dr. Richard Kurin

Dr. Kimberly Mendelson  
Dr. Ioannis Miaoulis  
Commissioner Damian Pardo  
Pradip Patiath  
Oana Reedy  
Oti Roberts  
Leslie Miller Saiontz



# Partners & Funders

Frost Science is very grateful to the individuals, institutions, foundations and corporations who collaborate with us and make our work possible. We also thank our members and community for their dedicated support throughout FY2024.

## PARTNERS

Adler Planetarium  
Adventure Science Center  
Aquatic Enterprises LLC  
Arizona Museum of Natural History  
Asahi/America Inc.  
Auburn University  
Badlands Dinosaur Museum  
Blue Missions  
Brockway Memorial Library  
Bureau of Land Management  
Cain Industries LLC  
California Academy of Sciences  
Canadian Museum of Nature  
Carleton University  
City of Miami Natural Areas  
Constellation Culinary Group  
COSM Studios  
Creative Aya AI Studio  
Cumbre Kids  
Dome Fest West  
Dream in Green  
Dynasty Marine Associates  
European Southern Observatory  
FilmGate Interactive Miami  
Florida Aquarium  
Florida Department of Environmental Protection\*  
Florida International University\*  
Florida Planetarium Association  
Foxfire Interactive  
GEN2050  
Harvard-Jolly Architecture  
Institute of Museum and Library Services  
International Planetarium Society  
Jackson Academy  
Jorge M. Pérez Art Museum of Miami-Dade County  
Kiddos Magazine  
Laser Fantasy  
Loews Hotels  
Loggerhead Marinelifelife Center  
Logos Capital  
McKinsey & Company Connected Leaders Academy  
Miami Dade College  
Miami-Dade County Miami EcoAdventures  
Miami-Dade County Natural Areas Management  
Miami-Dade County Parks, Recreation and Open Spaces  
Miami-Dade County Public Library System  
Miami-Dade County Public Schools  
Museum of the Rockies  
MyFi Studio  
NASA Scientific Visualization Studio  
National Marine Sanctuary Foundation\*  
National Oceanic and Atmospheric Administration\*  
Nova Southeastern University  
Odyssea Aquarium  
O, Miami  
Onassis ONX Studio  
PNC Bank  
Queen Mary University of London  
Roomful of Teeth  
Royal Ontario Museum  
SECORE International  
Science Museum of Minnesota  
Skanska  
Smithsonian Institution  
South Dakota Aquarium  
South Florida Wildlife Center  
Southeastern Planetarium Association  
SSIA Technologies (Sky-Skan)  
Taica Studios  
The Alhambra Orchestra of Miami, Florida  
The Dennis C. Moss Cultural Arts Center  
The Eluminati  
The Tobias Literary Agency  
Topos Graphics  
University of Alabama  
University of Alberta  
University of Colorado-Boulder  
University of Miami\*  
University of New England (New South Wales, Australia)  
University of Tampa  
U.S. Department of Interior  
Utah Field House of Natural History State Park Museum

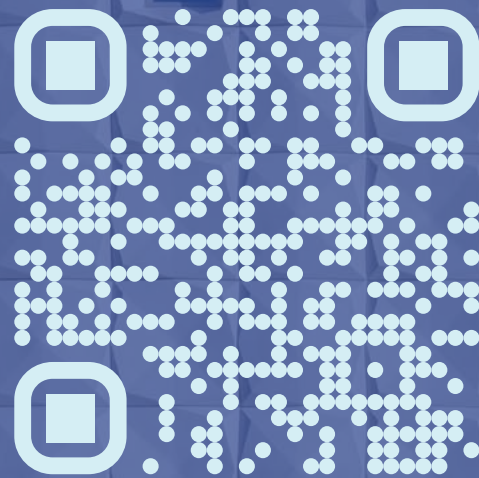
*\*denotes an insitution that is both a partner and a funder*

## ANNUAL DONORS (financial and in-kind services)

Adrien and Cecile Levinger  
Al & Jane Nahmad Family Foundation  
Andrea Nobil  
Anita and Rao Uppaluri  
Bal Harbour Village  
Baptist Health South Florida  
Berger Singerman LLP  
Bass Pro Shops & Cabela's Outdoor Fund  
Brightmark, LLC  
Casa Smiles  
Catherine Sprague  
Cesar and Cristina Alvarez  
Chandler and Oana Reedy  
Coconut Grove Sailing Club, Inc  
Commissioner Rene Garcia  
David Sapers  
Don and Amanda Mullen  
Dunspaugh-Dalton Foundation, Inc.  
Florida Department of State Division of Arts and Culture  
Florida Blue  
Flow Miami  
Forums Group Inc.  
Frank Kreutzer and Judith Jacobs-Kreutzer  
Gillian and Rhys Thomas  
Glenn W. Bailey Foundation  
Greenberg Traurig  
Homer Bonner Jacobs Ortiz  
Homestead-Miami Speedway  
Hub International Limited  
Ioannis Miaoulis  
Isermann Family Foundation  
Jackson Health System  
Jacqueline Simkin  
Jason Cooper  
John S. and James L. Knight Foundation  
Key Biscayne Community Foundation  
Kirk Foundation  
Maigerly Hernandez  
Mark Fisher  
Miami Downtown Development Authority  
Miller Family Foundation  
Morvillo Abramowitz Grand Iason & Anello PC  
Muriel Iwanowski and Jose Cornida  
National Fish and Wildlife Foundation  
NextEra Energy Foundation  
Nicklaus Children's Hospital  
Open Water  
OPKO Health, Inc.  
Oti and Remi Roberts  
Paul and Beatriz Hicks  
Pepsi Beverages Company  
Pinecrest Veterinary Hospital  
PNC Foundation  
Publix Super Markets Charities, Inc.  
Raymond James & Associates  
Reef Aquaria Design  
REEF Parking  
Roberta Chaplin  
Roberto Gonzalez  
Sankesh and Tanvi Abbhi  
Schwab Charitable  
Steven Frank  
Surfing's Evolution & Preservation Foundation  
Terru-Ann Feindt  
The Batchelor Foundation, Inc.  
The Cobb Family Foundation  
The Graham Companies  
The Miami Foundation  
The Moore Agency  
The Nature Conservancy  
The Office of Mayor Daniella Levine Cava  
Thermal Concepts, LLC  
Tommy's Team  
Toni Randolph  
Two Little Fishies  
Uvas Foundation  
Vector Group Ltd.  
Warburg Pincus Foundation  
Warren Lichtenstein  
Wells Fargo  
Wendy Mikos  
Westminster Barrington Foundation  
William R. Kenan Charitable Trust

# Thank You!

To learn more and support  
Frost Science, please visit  
our website:



PHILLIP & PATRICIA FROST MUSEUM OF SCIENCE

1101 Biscayne Blvd., Miami, FL 33132 | 305-434-9600 |    @FROSTSCIENCE



The Phillip and Patricia Frost Museum of Science is supported by the Miami-Dade County Department of Cultural Affairs and the Cultural Affairs Council, the Miami-Dade County Mayor and Board of County Commissioners of Miami-Dade County. This project is supported by the Building Better Communities Bond Program and the City of Miami. Sponsored in part by the State of Florida, Department of State, Division of Arts and Culture, the Florida Council on Arts and Culture, and the National Endowment for the Arts. The museum is accredited by the American Alliance of Museums, is an affiliate of the Smithsonian Institution and a member of the Association of Science and Technology Centers.