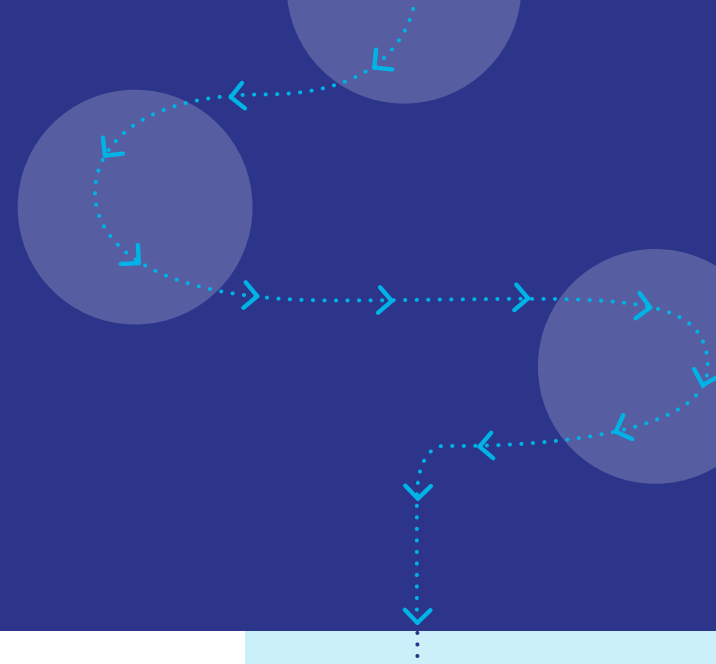
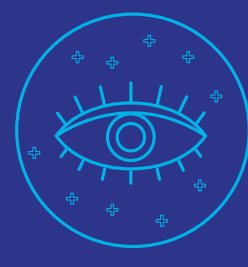


Guide to Your Visit



For both your safety and enjoyment, we have implemented a one-way route designed to make sure you can experience all of Frost Science. You will be required to maintain the designated one-way route at all times. Please follow directional signage along the way. Let's get started!



Frost Science is a smoke-free facility. No smoking or vaping on property.



RESTROOMS



HAND-WASHING STATIONS

LEVEL 6 (ROOF)

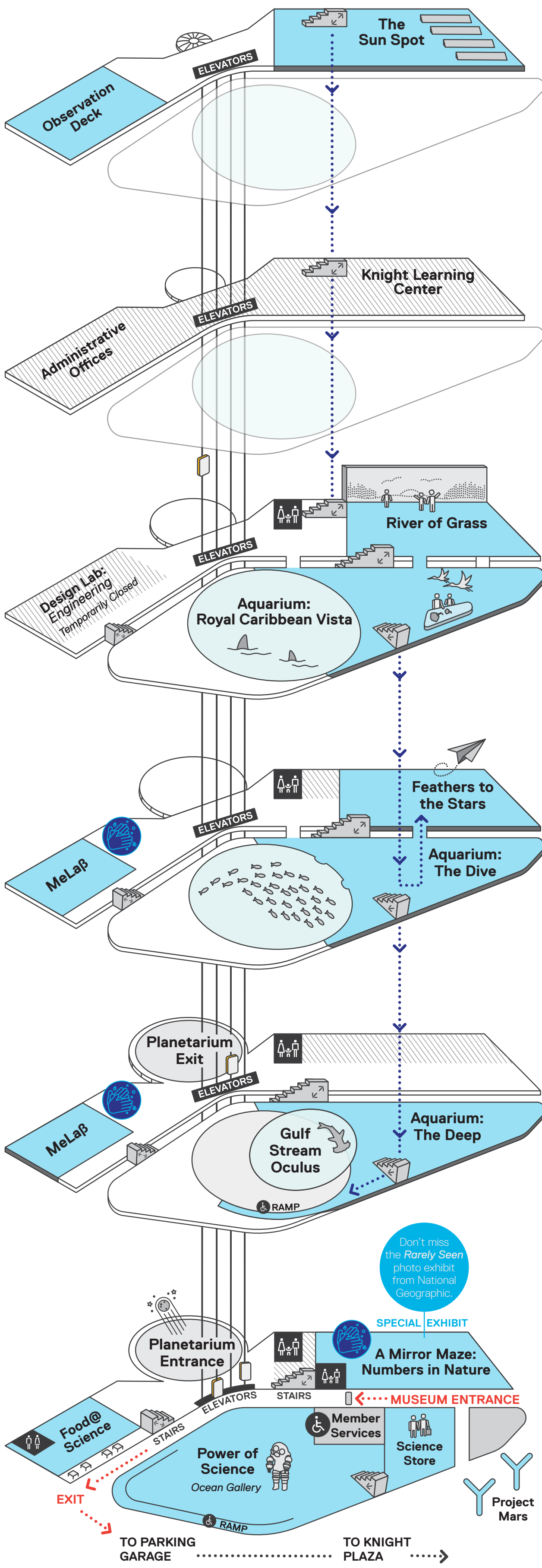
LEVEL 5

LEVEL 4

LEVEL 3

LEVEL 2

LEVEL 1



START YOUR JOURNEY HERE

Take the elevators to the Rooftop Terraces on Level 6.

Make your way down to the Vista Level of the Aquarium on Level 4 by taking the stairs, located near The Sun Spot.

Don't miss the River of Grass on Level 4, designed for children 6 and under.

Explore all the levels of the Aquarium by moving down through the building via the interior stairs.

You can access Feathers to the Stars on Level 3 from the Dive Level.

Visit the MeLaß on Level 2 after you exit the Frost Planetarium.

After visiting the Aquarium: Deep on Level 2, discover Power of Science, a new permanent exhibition in the Ocean Gallery on Level 1.

Visit A Mirror Maze: Numbers in Nature on Level 1 at the beginning or end of your visit.



Your ticket includes access to one Frost Planetarium show. Frost Planetarium shows will be available hourly starting at 10:00 a.m. Seating will be first come, first served. Please enter on Level 1.



During your visit, please remember to wash your hands frequently with soap and water for at least 20 seconds or use one of our many hand sanitizing stations.



Don't forget to grab a bite at Coffee@Science and shop for unique gifts and souvenirs at the Science Store!