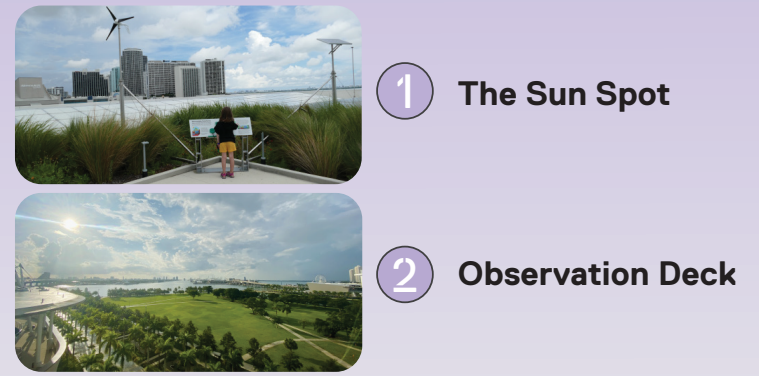
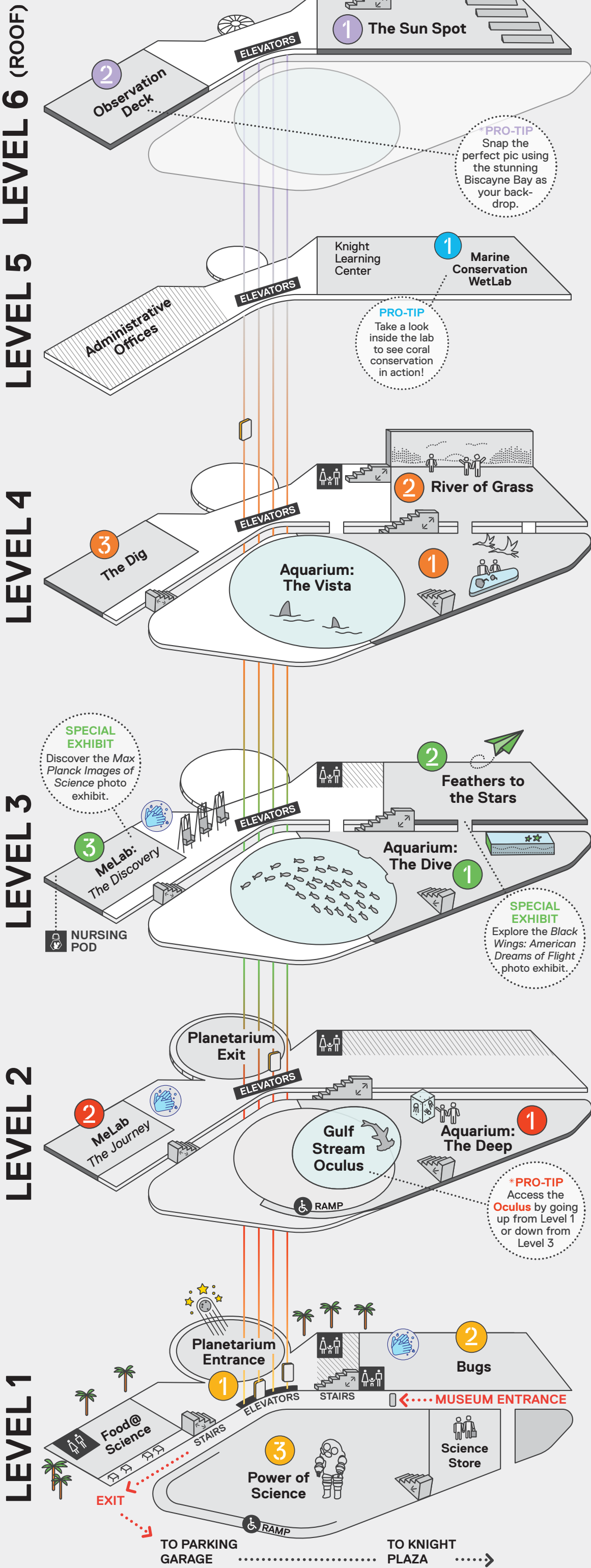
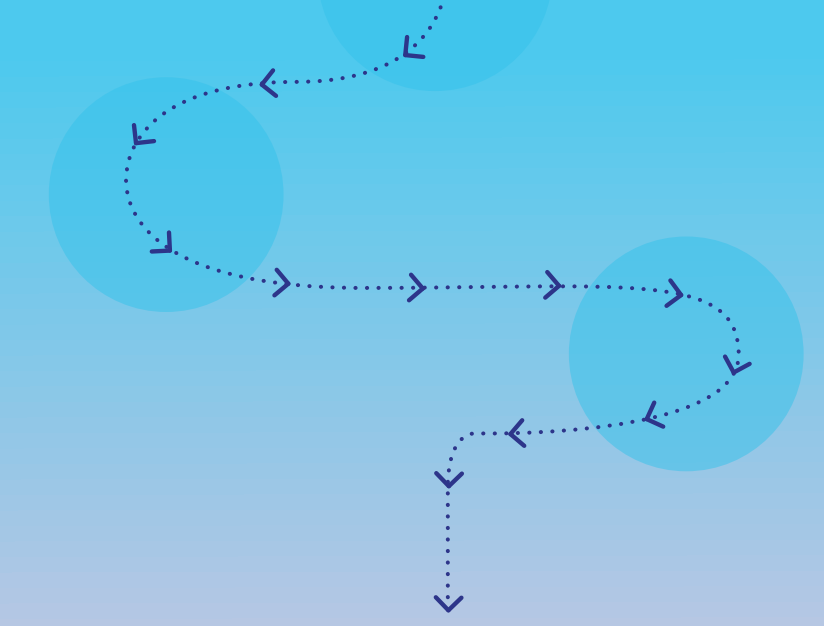
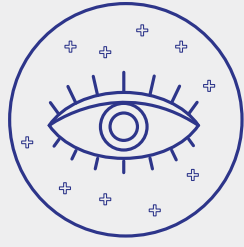


Guide to Your Visit



1 The Sun Spot

2 Observation Deck



1 Marine Conservation WetLab
This is an active research facility; visitation hours may vary.



1 Aquarium: The Vista



2 River of Grass



3 The Dig



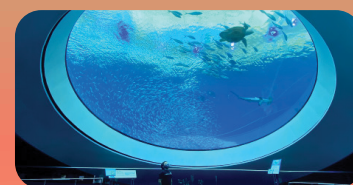
1 Aquarium: The Dive



2 Feathers to the Stars



3 MeLab



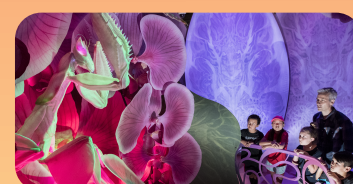
1 Aquarium: The Deep



2 MeLab



1 Frost Planetarium



2 Bugs
Opening November 23



3 Power of Science



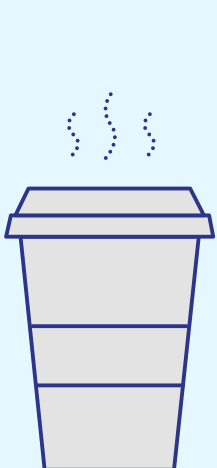
RESTROOMS



HAND-WASHING STATIONS



Frost Science is a smoke-free facility. No smoking or vaping on property.



Don't forget to grab a bite at **Food@Science** and shop for unique gifts and souvenirs at the **Science Store!**