

Science of Green

Sunday, March 17 EVENT SCHEDULE

Times & Location

Mini-Me Science: Color Me Green

Mini-Me Science is Frost Science's monthly program designed for you and your little one (children ages four and younger). Today's activity: using our senses to explore the colors of the rainbow before experimenting with color mixing and focusing on one of our favorite colors: green!

Separate paid registration is required. If interested, please inquire at Member and Guest Services or visit frostsscience.org/minime.

10:30 a.m.

LOCATION:
Level 5 – Knight Learning Center Classrooms

The Green Connection with Audubon Florida

Unearth the foundations of the native plant-native bird connection in our local area and see why it is important to do everything we can to keep native plants in our yards, parks, and wild places.

11:00 a.m. – 4:00 p.m.

LOCATION:
Level 1 – Atrium

Greener on the Inside

What powers plants? Get a microscopic look at the anatomy of a plant while getting a closer look at the pigment and the properties that allow plants to harness the power of the sun.

11:00 a.m. – 4:00 p.m.

LOCATION:
Level 3 – Outdoor Terrace

Green Solutions with Miami Dade College's Makers Club

Who says you can't grow anything in the concrete jungle? Check-out some innovative solutions by representatives from Miami Dade College including a vertical garden, one of the winners from the Miami Foundation 2018 Public Space Challenge.

11:00 a.m. – 4:00 p.m.

LOCATION:
Level 4 – Outdoor Terrace

Power of Greens with Baptist Health South Florida

Use your senses and get energized to identify the powerful health benefits of green fruits and vegetables to the human body. After fueling up, burn some of that energy by becoming a lean, green, Zumba dancing machine on our interactive dance floor (12:45 p.m. and 2:45 p.m.)

11:00 a.m. – 4:00 p.m.

LOCATION:
Level 1 – MeLaB, Baptist Health South Florida Gallery

iSpy Something Green with MUVE

I spy with my little eye something green! Download the iNaturalist application to your smart phone or use our identification guides and team up with Museum Volunteers for the Environment (MUVE) to help us discover and record important data about the vegetation at Frost Science.

12:00 p.m. & 2:00 p.m.

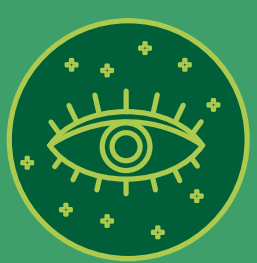
LOCATION:
Level 6 (Roof) – Observation Deck

Green Glow

What do glow sticks, copper sulfate and crystalized coral have in common? Join us for an enlightening demonstration.

1:00 p.m. & 3:00 p.m.

LOCATION:
Level 1 – Creatures of Light Exhibition



Insider's Tour – Green Edition

Sometimes it is not easy being green, but at Frost Science it is! Take a behind-the-scenes look at ways our building is being "green", including a special look for today only at our rooftop nursery. This experience even includes access to an animal feeding and encounter. The guided experience lasts approximately 60 minutes in length.

Separate paid registration is required. If interested, please inquire at Member and Guest Services.

2:15 p.m.

LOCATION:
Level 5 – Outside Elevator Bank